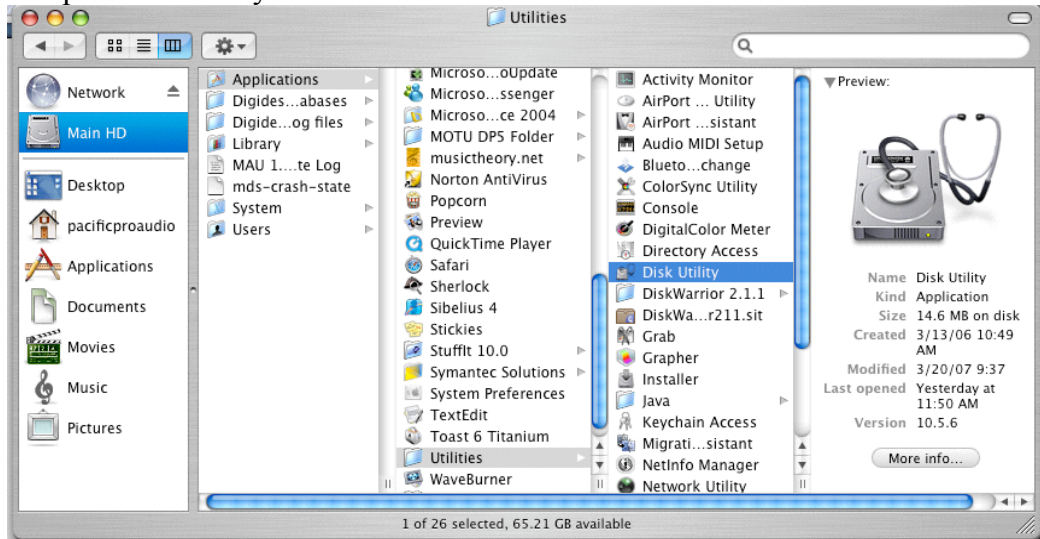
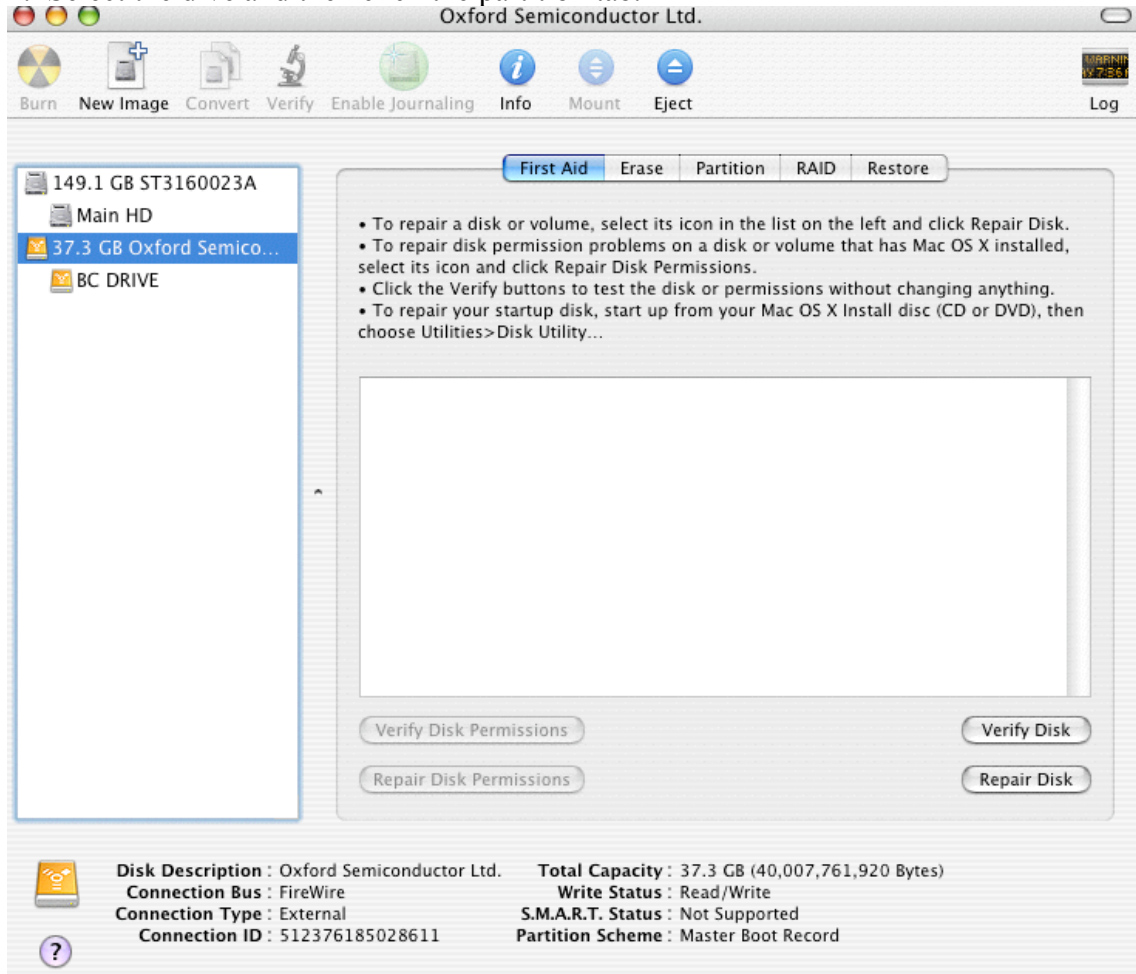


1. Open Disk Utility

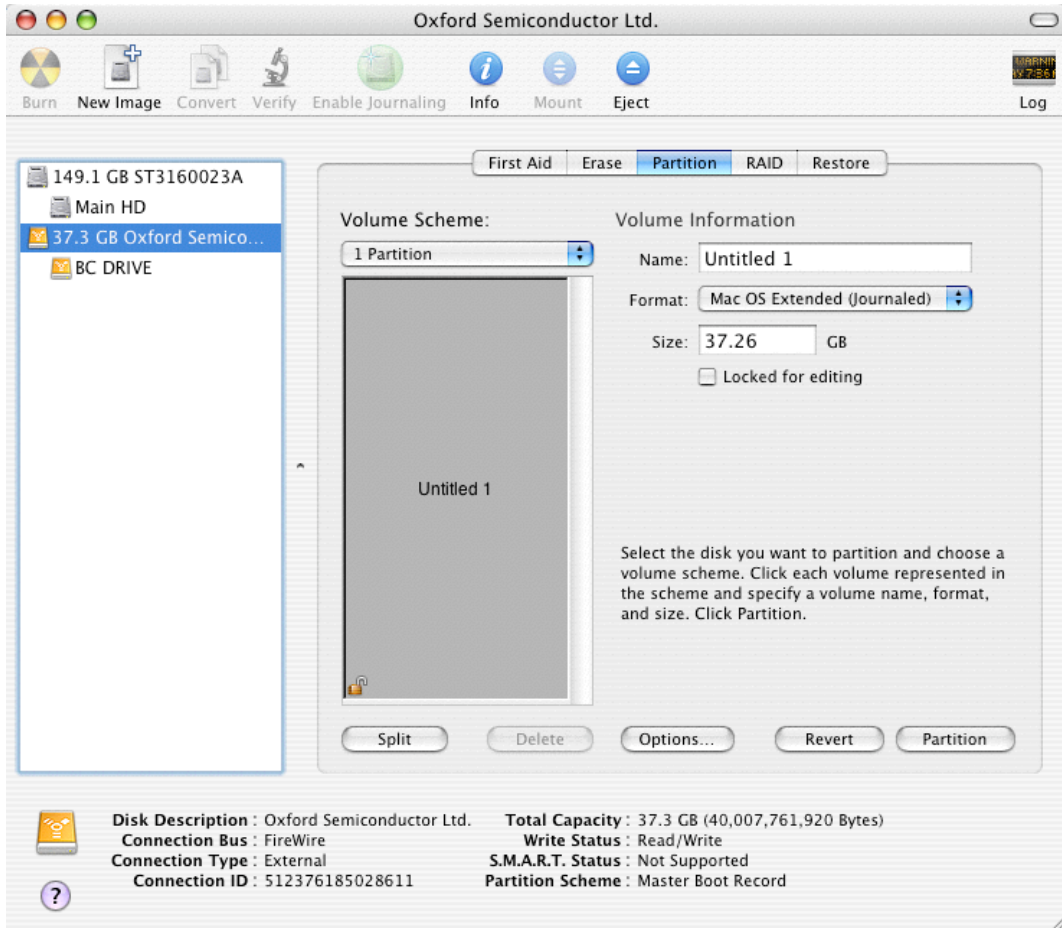


2. Select the drive and then click the partition tab.

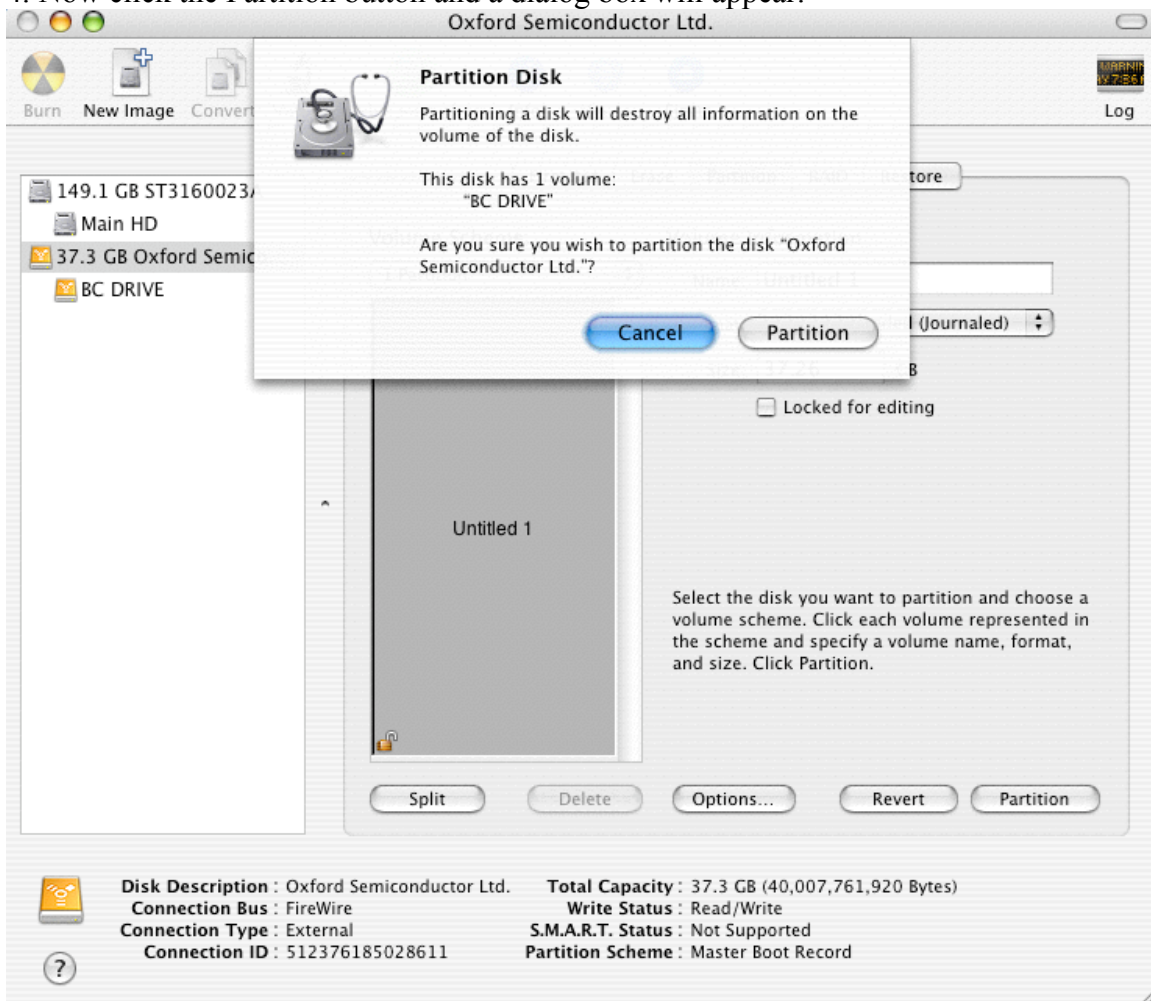


3. Set the format to Mac OS Extended (Journaled), then under Volume Scheme choose the number of partitions.

-Note DigiDesign recommends that partitions stay around 80gigs, so figure out how many partitions need to go on the drive.



4. Now click the Partition button and a dialog box will appear.



Read Carefully and then click partition.

The drive has now been formatted for OS X.