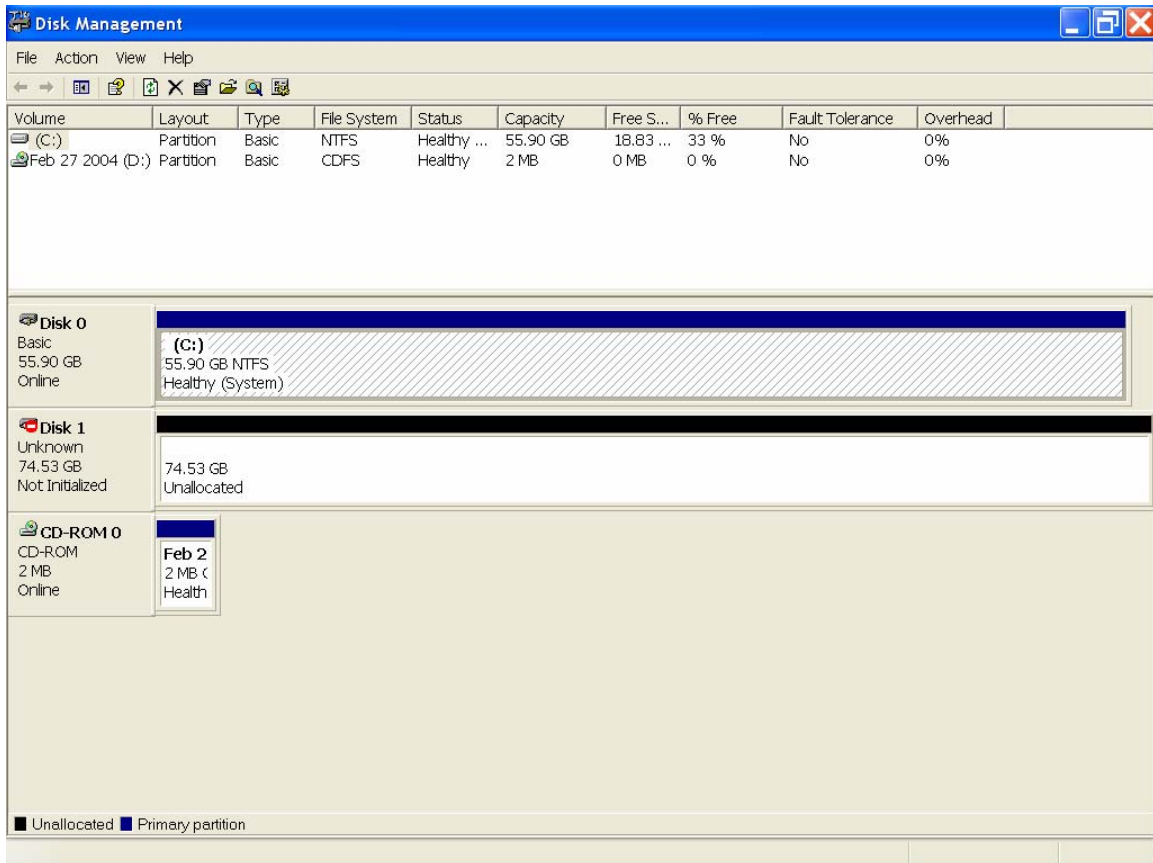
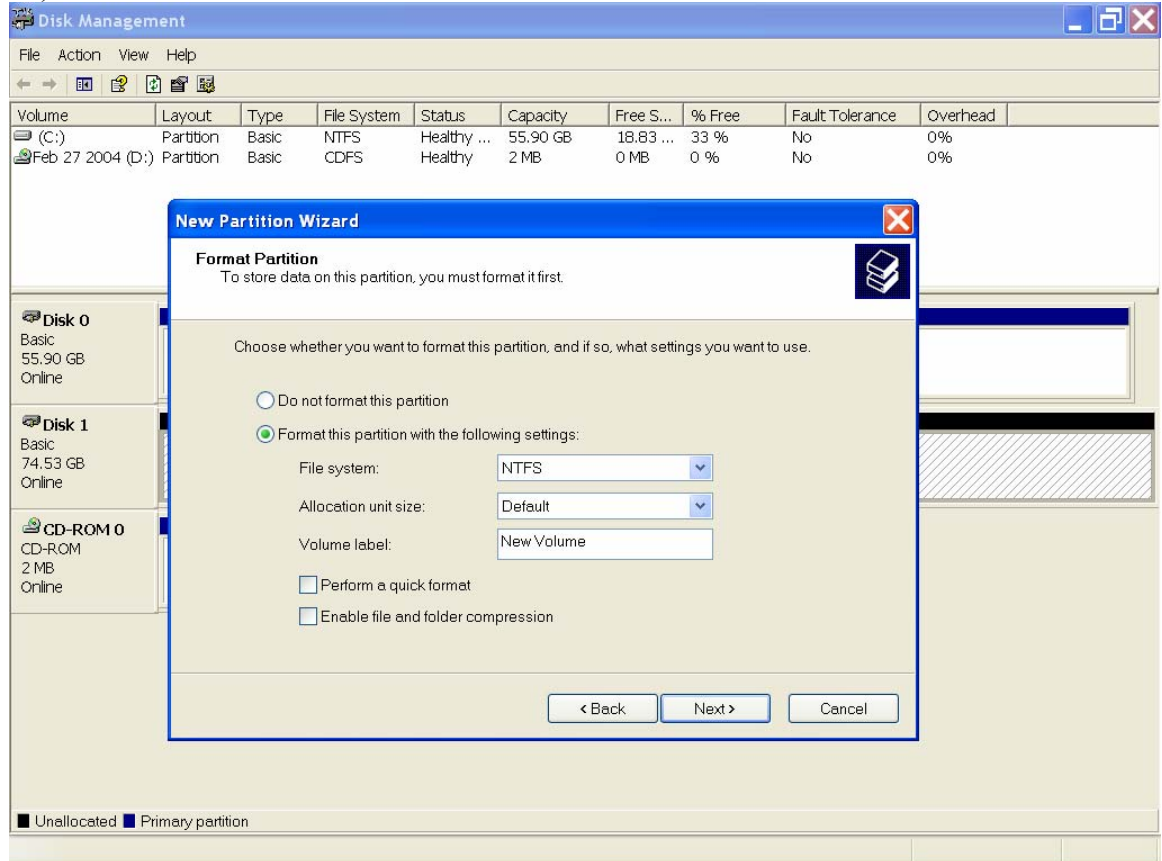


- 1) Hook up and turn on Firewire Drive
- 2) Click “START” then “RUN”, in the Open dialogue box type C:\WINDOWS\system32\diskmgmt.msc
- 3) When the WELCOME TO INITIALIZE AND CONVERT DISK WIZARD comes up click CANCEL
- 4) The Firewire drive may be any disk number depending on how many drives are in the system. In this case it is DISK 1 you can tell which one yours is by looking at the white bar next to the DISK number, it should say XXX.XX GB Unallocated .
- 5) Right click in the square on the disk Number (in this case “Disk 1”)
- 6) When the dialogue box comes up click “initialize disk”
- 7) Confirm the disk number by clicking “OK”
- 8) Now right click in the large white bar to the right that says “Unallocated”



- 9) When the dialogue box comes up click “New Partition”
- 10) Click Next
- 11) Make sure “Primary Partition” is selected, click “NEXT”
- 12) Make sure “Partition Size” is the same as “Maximum Disk Space” click “NEXT”

- 13) Click Next again
- 14) Make sure the screen is set as below



- 15) Click "NEXT"
- 16) Click "FINISH"
- 17) Close the program.....your done